



Clean Flow™

GASOLINE

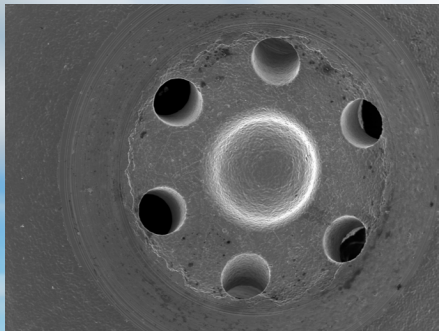
For more information go to www.GoFurtherGoFS.com
or talk to your local member cooperative.



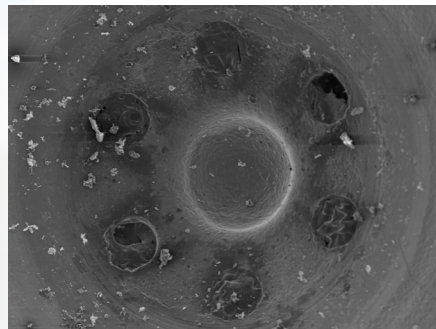
Clean Flow™

GASOLINE

UNLEASH THE CLEAN



◀ *Clean injector tip*



Injector tip with deposits ▶

PERFORMANCE

Better Fuel Economy - Engine manufacturers recognize the benefits of fuels with greater detergency and recommend them to improve fuel economy, emissions and overall engine performance. In fact, triple AAA research estimates up to a 4% fuel economy loss in engines containing deposits. FS Clean Flow contains nearly 2.5 times the detergency required by law to clean up engines and keep them clean.

Quicker starts - Clean valves, cylinders and fuel systems make for quicker starts. Your equipment is ready when you are.

Restored Power - Engine deposits impede ideal combustion, resulting in a loss of power, hesitation and rough operation. FS Clean Flow cleans up deposits to restore efficient engine combustion.

Fewer Emissions - Incomplete combustion also leads to increased emissions. FS Clean Flow is certified by the Environmental Protection Agency and meets California Air Resources Board requirements.

Without
FS Clean
Flow™



With
FS Clean
Flow™



PROTECTION

Storage Tanks - Rust and corrosion can destroy tanks and lines, ultimately plugging filters and reducing performance. Storage tanks and filters benefit from the corrosion protection in FS Clean Flow.

Fuel Systems - Fuel lines, pumps and injectors are also subject to rust and corrosion that shortens their life and interferes with optimum performance. FS Clean Flow inhibits corrosion for longer fuel system life.

Engine Components - Deposit formation on intake valves, injector tips and combustion chambers can be a serious problem. It occurs over time and is often unnoticed until something catastrophic happens. FS Clean Flow protects engines by preventing deposits and cleaning up deposits left behind from using lesser fuels. It reduces the risk of unscheduled maintenance and downtime, too.

FROM CLEAN FUEL FLOWS OPTIMUM PERFORMANCE



PROTECTION

- Storage Tanks
- Fuel Systems
- Engine Components

PERFORMANCE

- Quicker Starts
- Restored Power
- Better Fuel Economy
- Fewer Emissions

RELIABILITY

- Improved Storage Life
- Longer Engine Life
- Dependable Performance

RELIABILITY

Improved Storage Life - Left in storage for long periods, gasoline can become oxidized or "stale." With untreated fuel, it can happen in as little as 30 days. Stale, oxidized fuel is less stable and gums up carburetors and fuel jets contributing to poor starts and rough operation. Seasonal equipment, such as snow blowers, lawn mowers and farm equipment, are particularly vulnerable. FS Clean Flow keeps fuel fresh for up to 6 months longer.

Longer Engine Life - Engines that operate as intended are kept in service longer. FS Clean Flow protects engines from forming harmful intake valve, injector and combustion chamber deposits. It also cleans up deposits left behind by lower quality fuels. Better operation means fewer tear-downs, more up-time and lower maintenance costs.

Dependable Performance - When equipment is needed, it has to perform. Seasonal equipment is particularly vulnerable to the effects of stale fuel and gummed up carburetors and fuel jets. FS Clean Flow helps eliminate poor starts and rough operation.